



## ABANDON





SCOTT'S ADDITION —

# MEET SCOTT'S COLLECTION

**SCOTT'S COLLECTION** ushers in three apartment communities separated by mere steps and connected by sheer will—to embody a neighborhood's penchant for creativity and forward-thinking. Ink, Viv and Gem present styles each their own. Choose one to match yours or to counter it. Whichever you prefer.

The energy of Richmond's Scott's Addition is unmistakable. It's constant. It's positively relentless. Ink, Viv and Gem were born from the idea home can embody the best of its surroundings while portraying attributes of complementary vibes and personalities. To each their own. *For* each their own. Now there's an apartment experience that fits—three of them.



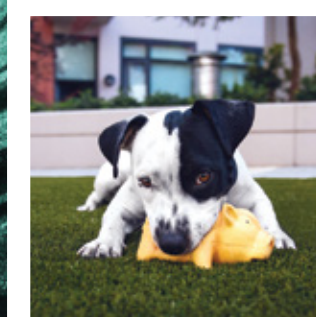
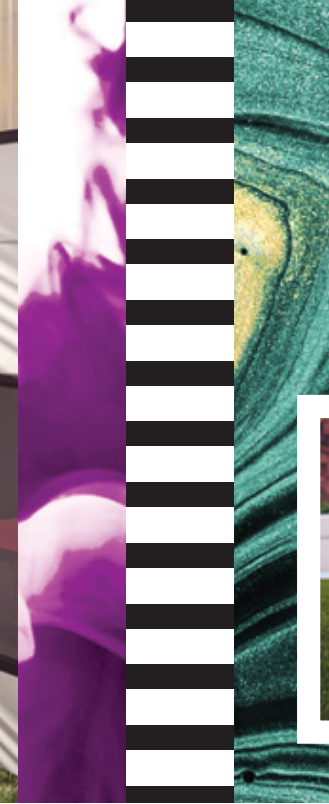
ink

viv

GEM





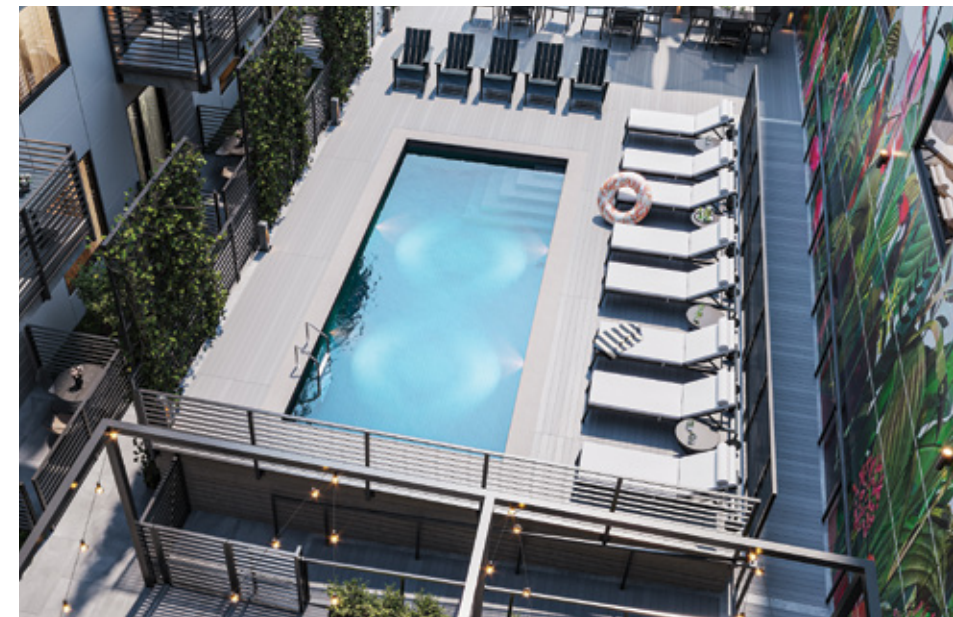


## COMMUNAL SPACES

# SHARE[ABLE]

## & PERSONAL SPACES

## INK VIV GEM ONE AND ALL



In the spirit of "community" each building's amenities are available to ALL Scott's Collection residents.

Highlights include:

Illuminated pool with sundeck / Entertainment kitchen and bar  
Community garden / Communal dining areas, fire pits and grilling stations  
Fitness center with zoned/on-demand training / Dog wash station  
Lighted inset nooks and "pocket" spaces / Co-working spaces

### APARTMENT FEATURES INK, VIV, GEM

**KITCHEN**

- Stainless steel appliances
- Quartz countertops
- Tile backsplash with LED under-cabinet lighting
- Built in (coffee) bar nook\*
- Moen fixtures

**BATH**

- Moen fixtures
- Tile bath and shower surrounds

**BEDROOM**

- Sleek ceiling fan
- Luxury blackout roller shades
- Built in wardrobes\*

**+**

- Luxury vinyl plank flooring
- LED overhead lighting throughout
- Full-size washer and dryer
- Wi-Fi enabled NEST thermostats
- High-speed internet access
- Keyless Smart Entry locks
- Balconies\*
- On-site parking

Each building's lobby features refreshments and lounge seating plus a mail space with adjoining package room

\* Available in select apartments







# INK

Expression  
doesn't dry.

Enter industrial-chic – a community inspired by the positively dramatic. Bold, yet artfully articulated design surrounds residents with a vibe unmistakably Ink. Centered around a pool deck who's violet glow recalls eighties blacklight posters, Ink's experience is uniquely mesmerizing.



## SHARED SPACES \*

### COURTYARD TERRACE ~

~ Illuminated pool with sundeck

↳ Lounge chairs

Dining tables and chairs under umbrellas

Lighted inset nooks with seating, fire pits and grills

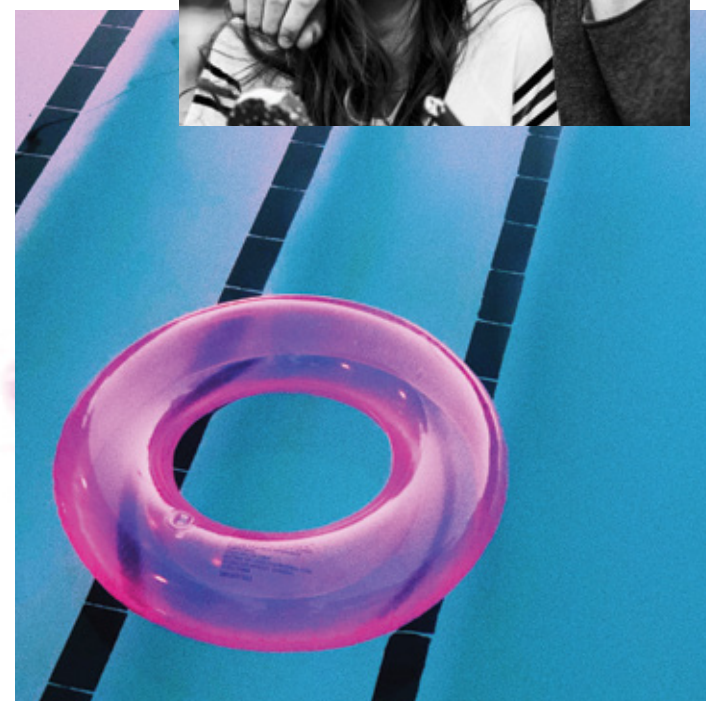
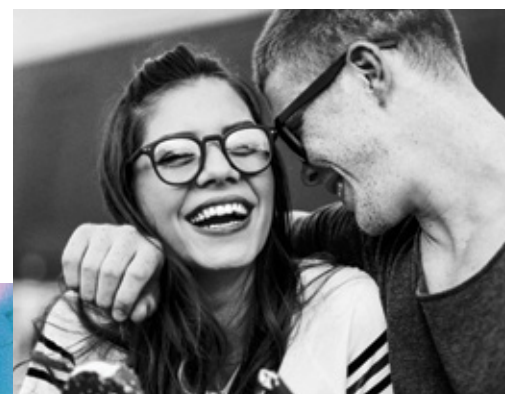
±> Freestanding vine walls



## 1 BR / 1 BR + DEN / 2 BR APTS

## \*

We keep our outdoor kitchen at Viv. Entertain anytime.







# Expression doesn't fade.

Enter geometry in motion—a community driven by vivid color and undulating forms. A lively, energized aesthetic reveals a playfulness aimed to inspire. Centered around an indoor/outdoor communal space, Viv's creative flair complements residents' penchant for entertaining.



viv

viv

viv

\* We keep our gym at Gem. Work out anytime.



viv

viv

viv

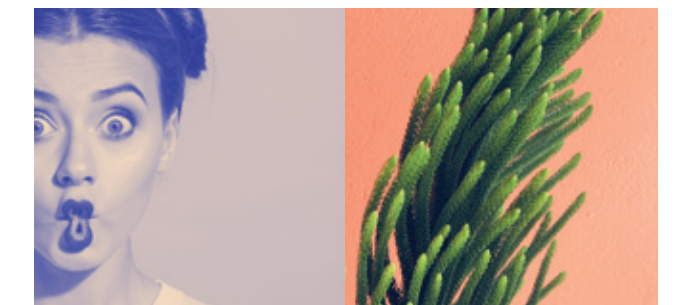
## SHARED SPACES \*

### INDOOR/OUTDOOR COURTYARD TERRACE

- Entertainment kitchen and bar with island seating
- Indoor living room-style seating and TV
- Accordion door adjoining integrated outdoor space
- Communal dining areas plus high-tops
- Lounge seating and fire pit
- Grilling stations
- Bocce ball

### OUTDOOR LOUNGE

- Co-working and lounge spaces
- Swing seating and double-gliders
- Interactive wall



1 BR / 1 BR + DEN / 2 BR APTS



# GEM

## Expression doesn't dim.

Enter visual harmony—a community enlivened by light's brilliance. A radiant atmosphere illuminates Gem's environments, revealing beauty and allure. Centered around indoor/outdoor social and wellness spaces, Gem's soothing nature sets it apart, while bringing residents together.



### SHARED SPACES \*

#### INDOOR/OUTDOOR COURTYARD TERRACE

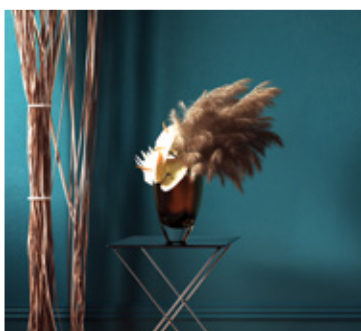
- Fitness center with zoned/on-demand training
- "Pocket" spaces with tiered seating for gatherings
- Communal dining areas plus lounge seating
- Grilling station
- Vegetation lounge with community garden
- Adjacent dog wash station

#### OUTDOOR LOUNGE

- Open living room-style space
- Private work and social spaces
- Daybed seating, lounge seating and fire pits



*We keep our pool at Ink.  
Swim anytime.*



1 BR / 1 BR + DEN / 2 BR APTS



## WE TAKE PRIDE IN OUR NUMBERS.

**WELCOME** to Richmond's fastest growing neighborhood—one buzzing with activity and rich with visuals, tastes and sounds. Once a vital industrial area, Scott's Addition is now home to an eclectic mix of craft breweries, boutique shops and eateries, music and film venues and art and social spaces. Scott's Collection puts you smack dab in the middle of a neighborhood who's personality is a product of its energy. Scott's Addition's artistic expression permeates every wall, establishment and experience, revealing a genuineness that continues to define its character. Good people, plentiful food and drink, an always-on vibe and an inspiring industrial-retro aesthetic. **All here. All yours.**



### HELLO, NEIGHBORHOOD

- o 7+ craft breweries, tasting rooms and 2 cideries
- o Restaurants and eateries of every cuisine imaginable
- o Artisan coffee shops and cafés
- o Pubs, arcade bars, sports bars and live music venues
- o Movie theaters, bowling, skee-ball and more social gaming
- o Art galleries, plus murals everywhere you turn
- o An array of fashion boutiques, eclectic shops and antiques
- o Boutique fitness studios including yoga, cardio and boxing
- o Organic food markets, grocers and convenience-shopping

Walkable / Plenty of street parking / RVA Bike Share station on West Leigh  
GRTC Pulse station at Broad and Cleveland / I-64, I-95 and I-195 easy to access